



## COMM GUARD WEB

For the safe filling and refilling of porcelain insulators in outdoor switchgear

B190R11

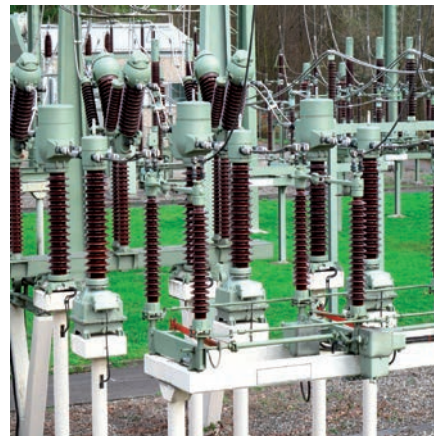
### Remote commissioning unit

Finest hairline cracks may occur on porcelain insulators for circuit breakers or other SF<sub>6</sub> insulated electrical equipment such as measuring or current transformers during transportation or as a result of material stress. Filling the gas compartment with SF<sub>6</sub> may lead to dangerous bursting of the insulator.

Thanks to the "CommGuard Web" filling unit it is now possible, for the very first time, to fill porcelain insulators in a controlled and safe way from a distance of up to 100 m. This unit enables the operator to control and monitor the fully automated filling process using a smartphone, tablet or laptop from outside the danger zone.

The device is equipped with an external temperature sensor and fills the gas compartment to a constant gas density. The temperature-compensated filling pressure is thus achieved with a precision of  $\pm 50$  mbar. Furthermore, there is the option of connecting DILO weighing scales to the unit and the gas quantity filled in can be precisely recorded (e.g. K091R67, 3-001-R021  $\pm 20$  g).

Different types of gas compartments can be added and recalled in the data base. Data recording completes the functions of the compact unit and sets new quality standards.



Safe and controlled filling of porcelain insulators by means of the "CommGuard Web" unit

- Robust and light portable unit with integrated storage space for accessories
- Simple operation using smartphone, tablet or laptop via WLAN
- Visual and acoustic signalling of system conditions on site
- Temperature compensation of the filling pressure
- Recording of the SF<sub>6</sub> weight
- Data connection via FTP interface



**B190R11****Remote commissioning unit****Technical data:**

Dimensions: W 500 mm, H 190 mm, D 295 mm
Weight: 8 kg
Operating temperature: 0 to 50 °C
Pressure range: max. 10 bar absolute
Max. WLAN range: up to 100 m depending on local conditions
Measurement accuracy: pressure ± 0.05 bar
Operating voltage: 110 - 240 V / 50 - 60 Hz alternating current

**Standard equipment:**

DILO couplings DN8 for storage cylinders and gas compartments
Gas compartment temperature recording: 0 to 50 °C
Weight recording via easy connection for WE100 scales (e.g. K091R67, 3-001-R021)
2 operating manuals in German or English

**Optional accessories at an extra charge:**

SF <sub>6</sub> gas refilling device (for connection to storage cylinders)	3-393-R...
2 m long rubber hose DN8 with DILO coupling tongue part DN8 on both ends	6-1042-R020
Detached WLAN antenna with magnetic base	05-1850-R001
4 m long cable with M12 connectors for serial data exchange with WE100 scales	05-1602-R304
Additional operating manual	6-0004-R213

**Packing:**

Packing for B190R11	05-1990-R003
---------------------	--------------