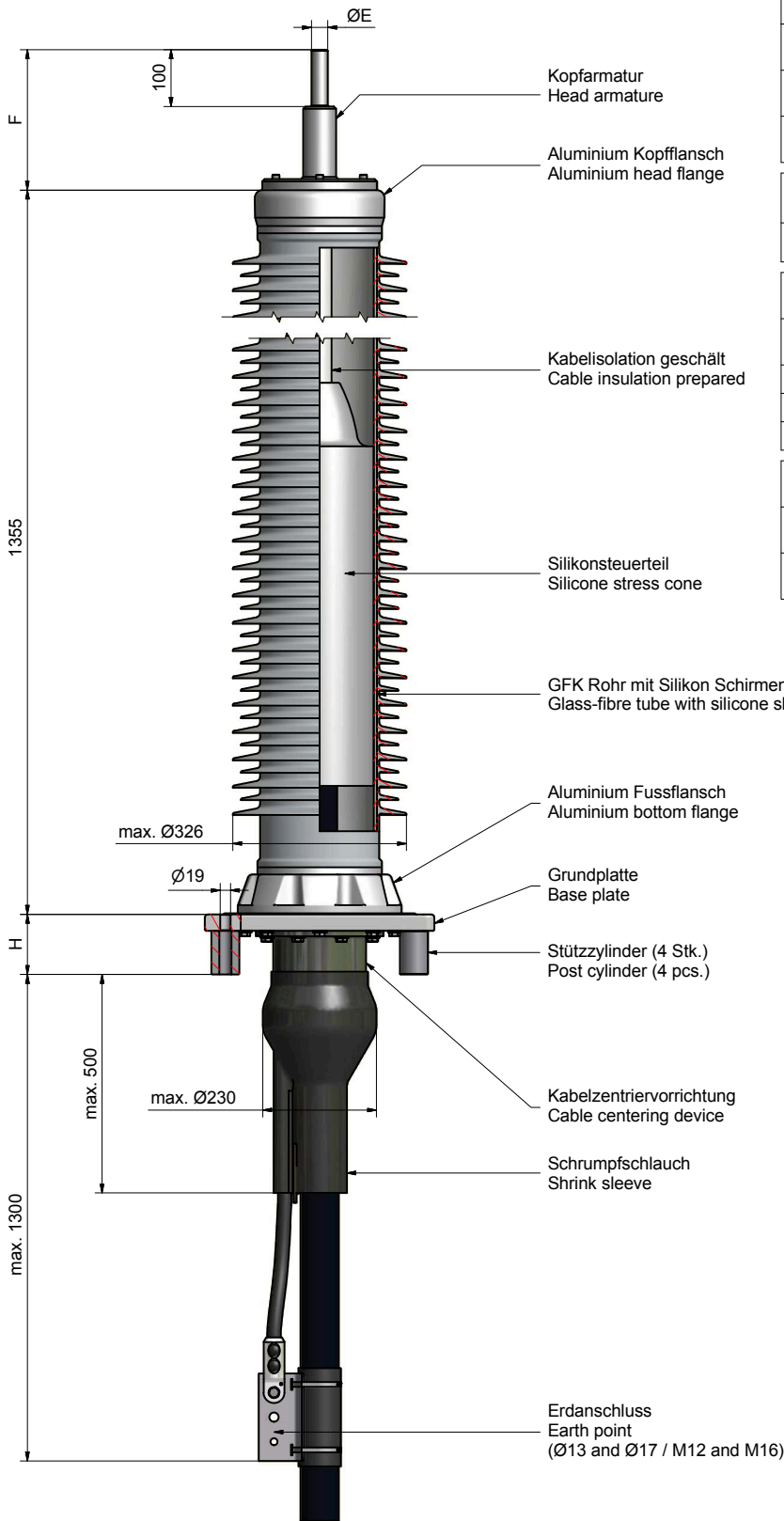


The reproduction, distribution and utilization of this document as well as the communication of its contents to others without explicit authorization of the copyright holder is prohibited. In the event of the payment of damages, all rights reserved. © Pfisterer.

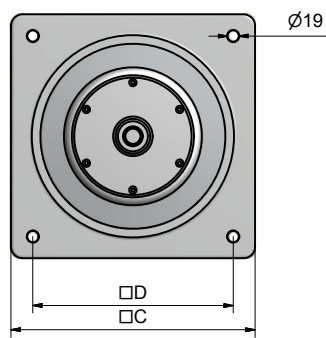


Höchste Spannung für Betriebsmittel (Um) Highest voltage for equipment (Um)	123 kV	
Kriechweg (min.) Creepage distance (min.)	3890 mm	
Verschmutzungsstufe Pollution class	IEC 60815 IEC 60815-3	31.6 mm/kV (IV) 54.8 mm/kV (e)
Farbe des Isolators Colour of insulator	grau grey	
Totalgewicht ohne Kabel (ca.) Total weight without cable (approx.)	70 kg	

Ø Kabelisolation geschält Ø Cable insulation prepared	51 - 91 mm	
Entspricht Leiterquerschnitt (ca.) Corresponding conductor cross-section (approx.)	150 - 2000 mm <sup>2</sup>	

Kopfarmatur Head armature		
Leiterquerschnitt Conductor cross section	ØE [mm]	F [mm]
≤ 500 mm <sup>2</sup>	30	200 - 400
> 500 mm <sup>2</sup> - < 1200 mm <sup>2</sup>	40	
≥ 1200 mm <sup>2</sup>	50	

Grundplatte Base plate	Kabelisolation Cable insulation [mm]	C / D [mm]	H [mm]
Standard	51.0 - 91.0	420 / 345	112
auf Anfrage on request		320 / 270	
		500 / 400	



Zeichnung nicht masstäblich / drawing not to scale	
Änderungen vorbehalten / subject to change	
Erstellt von created by	Umasankar 2020-12-21
Geprüft von approved by	wenk 2021-02-08
<b>PFISTERER</b> Ersatz für / replacement for: Für Kunden Dokumentart / type of document: S04-157859 Format / size: Blatt / sh. 01 / 1/1 And.rv. / rev. no.: 2020-12-21 Name / name: Umasankar Index / rev.: 01 <b>880111777A001</b>	
PFISTERER Switzerland AG Pfistererstrasse 1 88011 Rorschach, Schweiz	

## Technical data of DOC123-C39

### HV dry outdoor composite termination

<b>Manufacturer</b>	
Catalog name	HV-Cable termination DOC
Voltage range	up to 123 kV
Type designation	dry outdoor composite termination
Variant	according to cable data
Applied standard	IEC 60840

<b>Electrical levels (IEC 60840)</b>	
Rated voltage (U)	110 – 115 kV
Highest voltage (U <sub>m</sub> )	123 kV
(U <sub>0</sub> ) for determination of test voltage	64 kV
Max. design voltage to ground	71 kV

<b>Electrical type test levels (IEC 60840)</b>	
AC withstand voltage 15 min	160 kV
Lightning impulse voltage test (BIL)	550 kV
Heating cycles (AC voltage, 2 U <sub>0</sub> )	128 kV
Partial discharge test < 5 pc at 1.5 U <sub>0</sub>	96 kV

<b>Electrical routine test levels (IEC 60840)</b>	
AC withstand voltage 30 min	160 kV
Partial discharge test < 5 pc at 1.5 U <sub>0</sub>	96 kV
Each stress cone routine tested	yes
Pre-assembled with termination housing	yes

<b>Current of conductor</b>	
Max. current rating	same as cable
Max. thermal short circuit current (1 s)	63 kA
	max. same as cable

<b>Cantilever load on vertical installation</b>	
Mechanical connector	4 kN

<b>Operation conditions</b>	
Ambient temperature	- 30 / + 55 °C
Max inclination	30°

<b>Stress control</b>	
Field control method	geometrical
Type	pre-moulded
Material	silicone rubber
Production method	injection moulding
Production environment	clean room
Stress cone pre-assembled in termination housing	yes

<b>Termination housing</b>	
Filling compound	none
Overall length excl. head armature	1355 mm
Tube diameter with sheds (max.)	326 mm
Housing material	fibreglass
Sheds material	silicone rubber
Pollution class IEC 60815	31.6 mm/kV
Pollution class IEC 60815-3	54.8 mm/kV
Creepage distance (min.)	3890 mm
Flash over distance (min.)	1205 mm

<b>Head armature</b>	
Connector standard	bolted (SICON)
Material	aluminium blank
Conductor size	150 – 2000 mm <sup>2</sup>
compression armature	On request

<b>Cable type</b>	
Type	XLPE
Screen type	wire, lead sheath corrugated Al & Cu
Diameter over prepared insulation	51 – 91 mm
Range of overall cable diameter	50 – 150 mm

<b>Base plate</b>	
Material	aluminium
Fixing holes distance	see dimension D on drawing

<b>Post cylinder</b>	
Included in scope of supply	4 pcs
Material	steel (hot-galvanized)

<b>Earthing</b>	
Type of cable screen to be used	all types
Earth point	50 – 630 mm <sup>2</sup>
Earthing cable	supplied by customer

<b>Installation</b>	
Installation work	only by certified fitters
Installation temperature	min. 0 / max. + 55 °C
Site conditions	clean environment
Installation instruction for each kit	yes

<b>Packing</b>	
Treated wooden box (seaworthy/airworthy)	ISPM15
Gross weight 3 pcs (approx.)	500 kg
Pack volume 3 pcs (approx.)	3.3 m <sup>3</sup>

<b>Storage</b>	
Conditions	clean and dry
Long-term storage temperature	min. 0 / max. + 25 °C
Shelf life items	2 years
Non-shelf life items	10 years
Expected service life after installation	40 years

